

PRODUCT INFORMATION PACKET

Model No: 080T34FH15413

Catalog No: R372A

1 HP General Purpose, 3 phase, 3600 RPM, 230/460 V, 80C Frame, TEFC
Aluminium TEFC Motors



Regal and Marathon are trademarks of Regal Beloit Corporation or one of its affiliated companies.

©2020 Regal Beloit Corporation, All Rights Reserved. MC017097E

REGAL



Nameplate Specifications

| | | | |
|------------------------|-----------------------|----------------------------|------------------------------------|
| Output HP | 1 Hp | Output KW | 0.75 kW |
| Frequency | 60 Hz | Voltage | 230/460 V |
| Current | 2.8/1.4 A | Speed | 3420 rpm |
| Service Factor | 1.15 | Phase | 3 |
| Efficiency | 77 % | Power Factor | 83 |
| Duty | Continuous | Insulation Class | F |
| Design Code | NO DESIGN CODE | KVA Code | H |
| Frame | 80C | Enclosure | Totally Enclosed Fan Cooled |
| Thermal Protection | No | Ambient Temperature | 40 °C |
| Drive End Bearing Size | 6204 | Opp Drive End Bearing Size | 6204 |
| UL | Recognized | CSA | Y |
| CE | Y | IP Code | 55 |

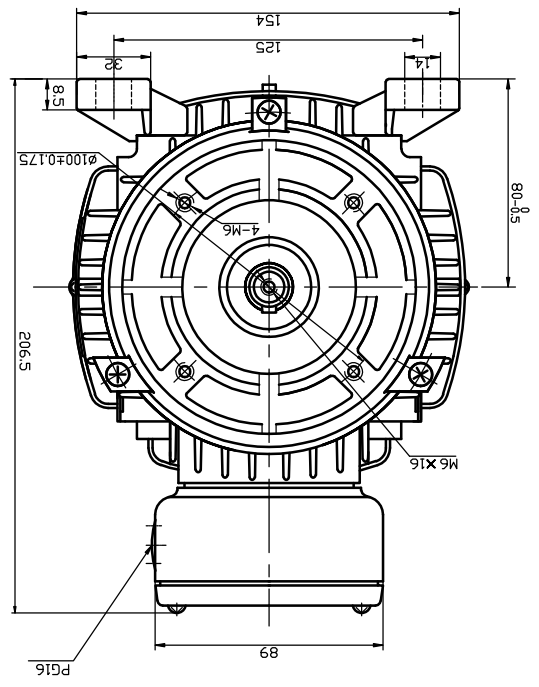
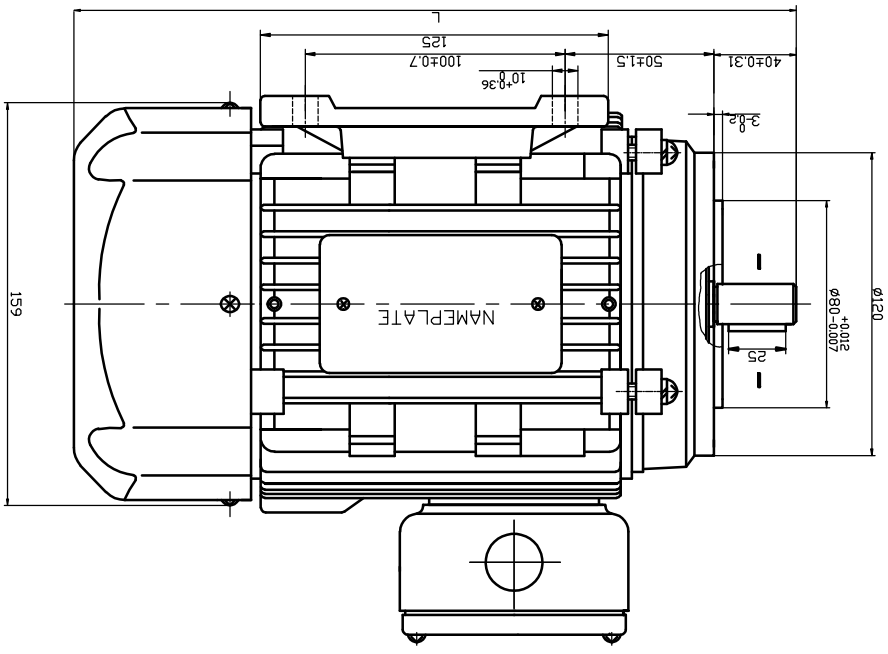
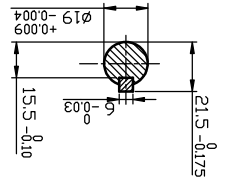
Technical Specifications

| | | | |
|-----------------------|------------------------------------|-----------------------|------------------------|
| Electrical Type | Squirrel Cage Induction Run | Starting Method | Across The Line |
| Poles | 2 | Rotation | Reversible |
| Resistance Main | 0 Ohms | Mounting | Rigid Base |
| Motor Orientation | Horizontal | Drive End Bearing | Ball |
| Opp Drive End Bearing | Ball | Frame Material | Aluminum |
| Shaft Type | IEC | Overall Length | 11.10 in |
| Frame Length | 6.10 in | Shaft Diameter | 0.750 in |
| Shaft Extension | 1.57 in | Assembly/Box Mounting | F3 |
| Outline Drawing | 039072-R372A | Connection Drawing | 00546501ME |

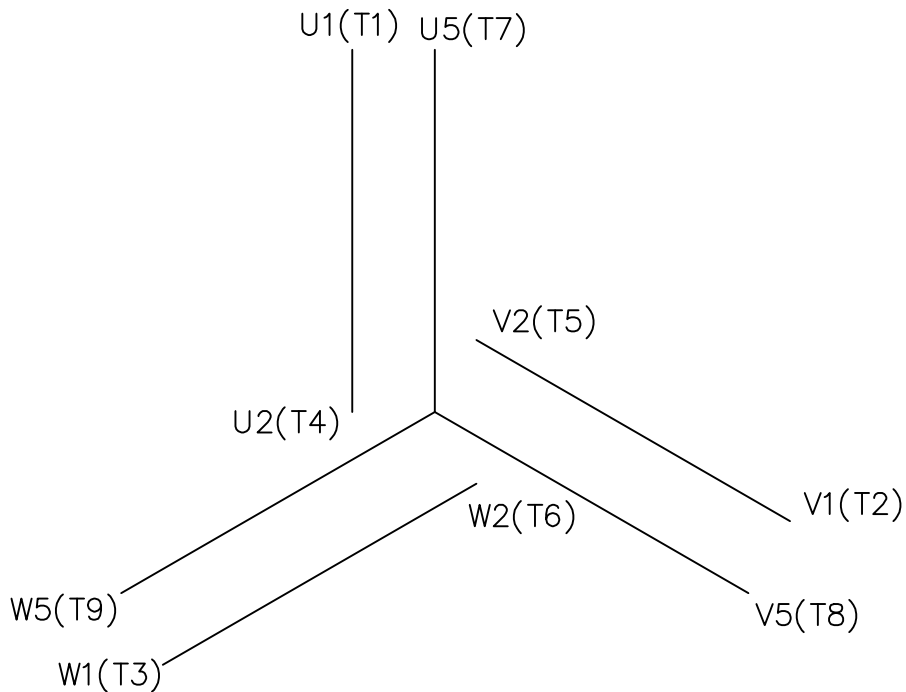
This is an uncontrolled document once printed or downloaded and is subject to change without notice. Date Created:18/06/2020

| | | | | | | | | | |
|---|-----------|-------|-------|-----------|---------------------------------------|--------|---------|--------|-------------|
| THIS DRAWING IN DESIGN AND DETAIL IS OUR PROPERTY AND MUST NOT BE USED EXCEPT IN CONNECTION WITH OUR WORK ALL RIGHTS OF DESIGN AND INVENTION ARE RESERVED | | | | | | | | | |
| THIS IS AN ELECTRONICALLY GENERATED DOCUMENT - DO NOT SCALE THIS PRINT | | | | | | | | | |
| NO. | REVISION | | | | | | | | |
| | BY & DATE | CHK'D | CHG'D | FRACTIONS | ± 1/64 | ANGLES | ± 1/2° | FHF. | REV. |
| | | | | XXXX | ± 0.005 | XXXX | ± 0.005 | SCALE | SMC |
| | | | | XX | ± 0.05 | XX | ± 0.05 | R.F.P. | |
| | | | | X | ± 0.1 | X | ± 0.1 | APPR. | |
| | | | | | ± 2.5 | | ± 2.5 | DRAWN | VX 16/12/01 |
| | | | | | ± 1 | | ± 1 | TITLE | OUTLINE |
| | | | | | DEC. INCHES | | | | |
| | | | | | METRIC | | | | |
| | | | | | TOLERANCES UNLESS OTHERWISE SPECIFIED | | | | |
| REGAL BELOIT CORP. | | | | | | | | | |

| | | | | | | | |
|----------|---|-------|-----|-------|-----|-----------|-----|
| CAT LOG. | L | R372A | 282 | R373A | 302 | 192247.00 | 302 |
|----------|---|-------|-----|-------|-----|-----------|-----|



Uncontrolled Copy



REF. DECAL (IEC) 080644
REF. DECAL (NEMA) 080446

IEC MARKINGS

| LOW VOLTAGE | | | HIGH VOLTAGE | | | |
|--------------|-------|-------|--------------|-------|----------|-------|
| | | | | | | |
| LINE VOLTAGE | L1 | L2 | L3 | JOIN | | |
| TERMINAL | U1 | V1 | W1 | W2 | U2 | V2 |
| LOW | U1,U5 | V1,V5 | W1,W5 | --- | U2,V2,W2 | --- |
| HIGH | U1 | V1 | W1 | U2,U5 | V2,V5 | W2,W5 |

NEMA MARKINGS

| LOW VOLTAGE | | | HIGH VOLTAGE | | | |
|--------------|--------|--------|--------------|--------|----------|--------|
| | | | | | | |
| LINE VOLTAGE | L1 | L2 | L3 | JOIN | | |
| TERMINAL | U1 | V1 | W1 | W2 | U2 | V2 |
| LOW | T1, T7 | T2, T8 | T3, T9 | --- | T4,T5,T6 | --- |
| HIGH | T1 | T2 | T3 | T4, T7 | T5, T8 | T6, T9 |

| | | | | | | | | | | |
|--|----------|-----------|-----|-----------------------------|------------|--------------------------|--|---------------------|-------------|------|
| | | | | TOLERANCES UNLESS SPECIFIED | | | | DRAWN JGO 3/10/04 | | |
| | | | | DEC. | INCHES | | | CHK SB 02-17-2010 | | |
| | | | | .X | ±.1 | | | APPD MJS 02-17-2010 | | |
| | | | | .XX | ±.01 | | | SCALE 1=1 | | |
| | | | | .XXX | ±.005 | | | REF | | |
| | | | | .XXXX | ±.0005 | MAT'L. IEC/NEMA MARKINGS | | FMF | | |
| NO. | REVISION | BY & DATE | CHK | ANG | ±1/2' | FINISH | | PREV | | |
| THIS DRAWING IN DESIGN AND DETAIL IS OUR PROPERTY AND MUST NOT BE USED EXCEPT IN CONNECTION WITH OUR WORK ALL RIGHTS OF DESIGN AND INVENTION ARE RESERVED THIS IS AN ELECTRONICALLY GENERATED DOCUMENT - DO NOT SCALE THIS PRINT | | | | RFP | 02-17-2010 | CAD FILE 00546501ME | | SIZE | DRAWING NO. | REV. |
| | | | | DIST | | | | A | 005465ME-01 | |

